

# Adapting the *Better Health at Lower Cost* Template from the CHC Value Toolkit

## Phase 1. Define Your Communication Strategy

Before you begin adapting this template, it will be helpful to think through your communication strategy using the [CHC Value Toolkit: Quick Start Guide](#). The six steps are outlined below.



If the *Better Health at Lower Cost* template can meet your needs, then proceed to Phase 2.

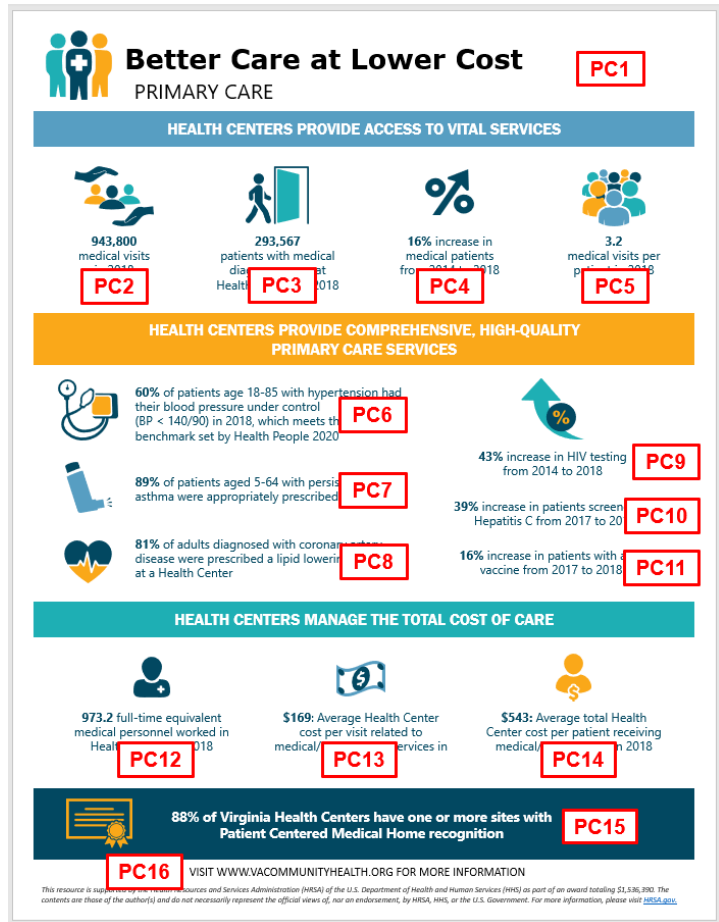
## Phase 2. Create Your Custom Template

1. Download and open the *Better Health at Lower Cost* PowerPoint template. Save to your computer.
2. Note that this template has three sections, one each for Primary Care, Oral Health, and Behavioral Health. You may decide to use one, two, or all three sections.
3. Also note that all of the content (text and icons) is embedded within simple text boxes. You can create your custom template by replacing the content and adjusting the layout according to your communication strategy.
4. For this product we extracted the most meaningful data that tell a positive story for Virginia FQHCs statewide. The indicators we used for Virginia FQHCs overall may not be the same indicators that would tell a powerful story for your CHC individually. Feel free to remove or add data points based on your communication strategy in Phase 1.

### PRIMARY CARE PAGE - Sources

This list below indicates the sources of data for the Virginia-level report, which you can use when customizing this template for your health center.

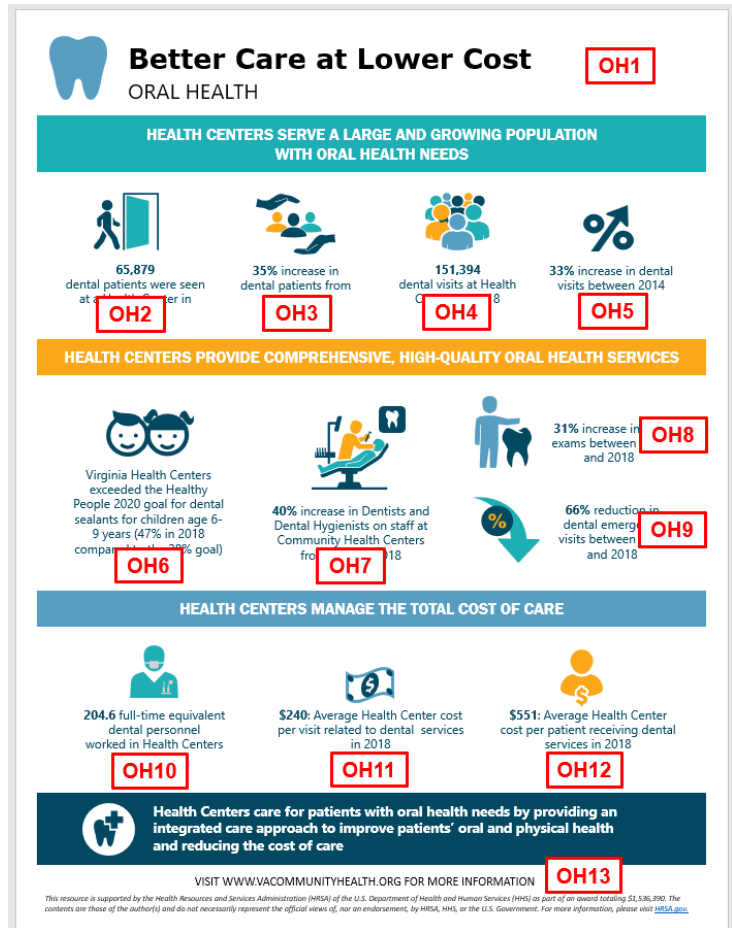
- **PC1** – Your logo
- **PC2** – UDS Table 3A
- **PC3** – UDS Table 5, Line 15, Column C
- **PC4** – UDS Table 5, Line 15, Column C (Trend)
- **PC5** – UDS Table 5, Line 15, Column B / Column C
- **PC6** – UDS Table 7, Section B; HealthyPeople2020.gov
- **PC7** – UDS Table 6B, Line 16
- **PC8** – UDS Table 6B, Line 17
- **PC9** – UDS Table 6A, Line 21 (Trend)
- **PC10** – UDS Table 6A, Line 21b, Column B (Trend)
- **PC11** – UDS Table 6A, Line 24a, Column B (Trend)
- **PC12** – UDS Table 5, Line 15, Column A
- **PC13** – (UDS Table 8A, Line 4, Column C) / (Table 5, Line 15, Column B)
- **PC14** - (UDS Table 8A, Line 4, Column C) / (Table 5, Line 15, Column C)
- **PC15** – Your PCMH recognition status
- **PC16** – Your website



## ORAL HEALTH PAGE - Sources

This list below indicates the sources of data for the Virginia-level report, which you can use when customizing this template for your health center.

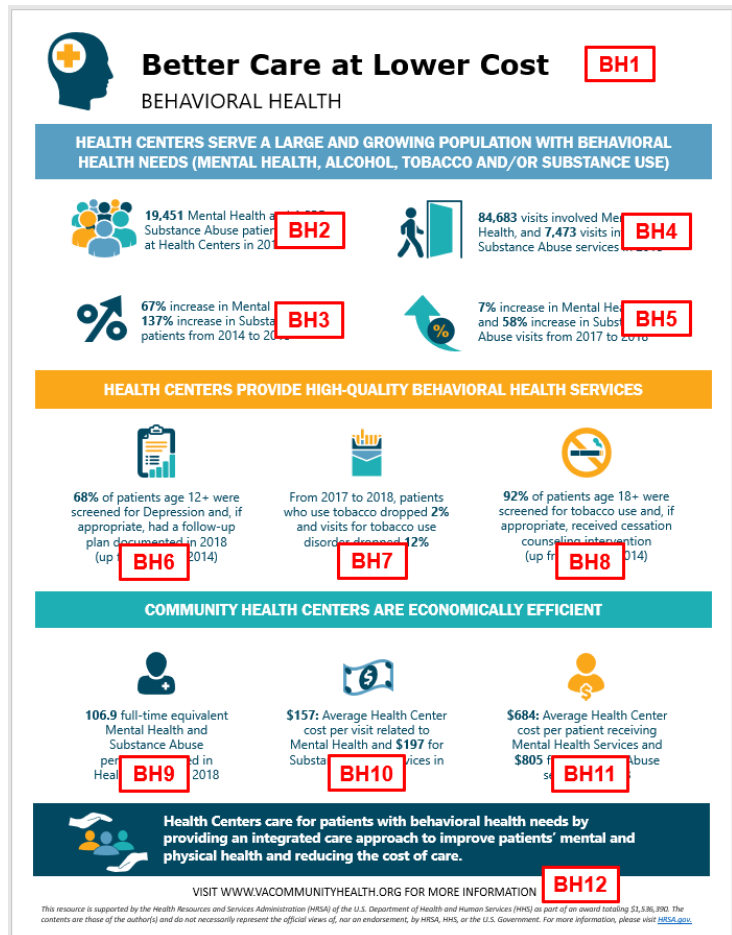
- **OH1** – Your logo
- **OH2** – UDS Table 5, Line 19, Column C
- **OH3** – UDS Table 5, Line 19, Column C (Trend)
- **OH4** – UDS Table 5, Line 19, Column B
- **OH5** – UDS Table 5, Line 19, Column B (Trend)
- **OH6** – UDS Table 6B, Line 22; HealthyPeople2020.gov
- **OH7** – UDS Table 5A, Line 16, 17, 17a (Trend)
- **OH8** – UDS Table 6A, Line 28 (Trend)
- **OH9** – UDS Table 6A, Line 27, Column A (Trend)
- **OH10** – UDS Table 5, Line 19, Column A
- **OH11** – (UDS Table 8A, Line 5, Column C) / (UDS Table 5, Line 19, Column B)
- **OH12** – (UDS Table 8A, Line 5, Column C) / (UDS Table 5, Line 19, Column C)
- **OH13** – Your website



## BEHAVIORAL HEALTH PAGE - Sources

This list below indicates the sources of data for the Virginia-level report, which you can use when customizing this template for your health center.

- **BH1** – Your logo
- **BH2** – UDS Table 5, Lines 20 & 21, Column C
- **BH3** – UDS Table 5, Lines 20 & 21, Column C (Trend)
- **BH4** – UDS Table 5, Lines 20 & 21, Column B
- **BH5** – UDS Table 5, Lines 20 & 21, Column B (Trend)
- **BH6** – UDS Table 6B, Line 21
- **BH7** – UDS Table 6A, Line 19a, Column B
- **BH8** – UDS Table 6B, Line 14a
- **BH9** – UDS Table 5, Lines 20 & 21, Column A
- **BH10** – (UDS Table 8A, Line 6, Column C) / (UDS Table 5, Line 20, Column B) | (UDS Table 8A, Line 7, Column C) / (UDS Table 5, Line 21, Column B)
- **BH11** – (UDS Table 8A, Line 6, Column C) / (UDS Table 5, Line 20, Column C) | (UDS Table 8A, Line 7, Column C) / (UDS Table 5, Line 21, Column C)
- **BH12** – Your website



### Phase 3. Adjust Formatting of Your Custom Template

Once you adjust the content within your *Better Health at Lower Cost* document, you may wish to adjust the formatting to fit your organization's branding or to optimize look and feel. There are a number of ways that the formatting can be adjusted:

1. Add your logo (mentioned in Phase 2 above). To do so, insert new picture and adjust sizing as needed. Two options for placement include the top right corner or replacing the icon in the top left corner.
2. Edit the colors of the section headers and footer. You may wish to match the section headers to your organization's branding colors. To do so, select the content box, then adjust the "Shape Fill" color.
3. Change the icons – perhaps selecting the gray-scale colored icons or selecting different icons that match your adjusted content. To do so, visit the *Icon and Image Library* in the CHC Value Toolkit.
4. Add a section to highlight a specific value message. To do so, add a new text box, then adjust the layout of the surrounding text boxes.
5. Adjust the layout of the icons and text boxes. To do so, simply click (use the SHIFT key to highlight more than one content element) then drag to the desired place in the document.